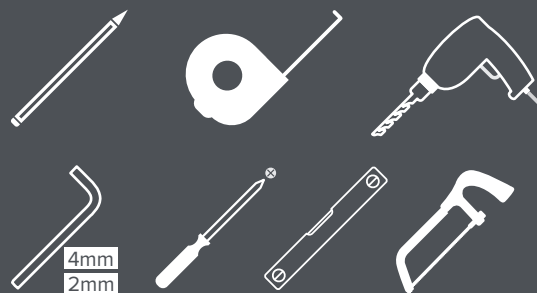


HOW TO FIT SIGNATURE STORAGE

Assembly Instruction

TOOLS REQUIRED:



! Please check your opening for any hidden electrical wires and water pipes before / screwing.

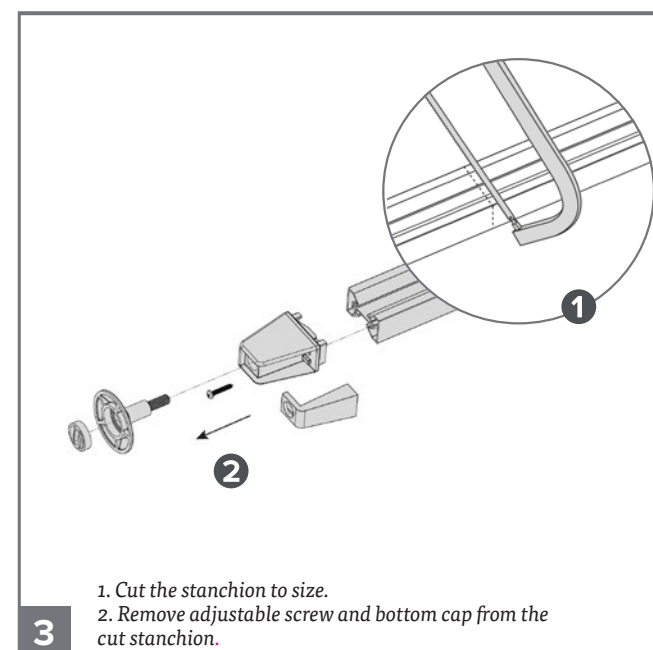
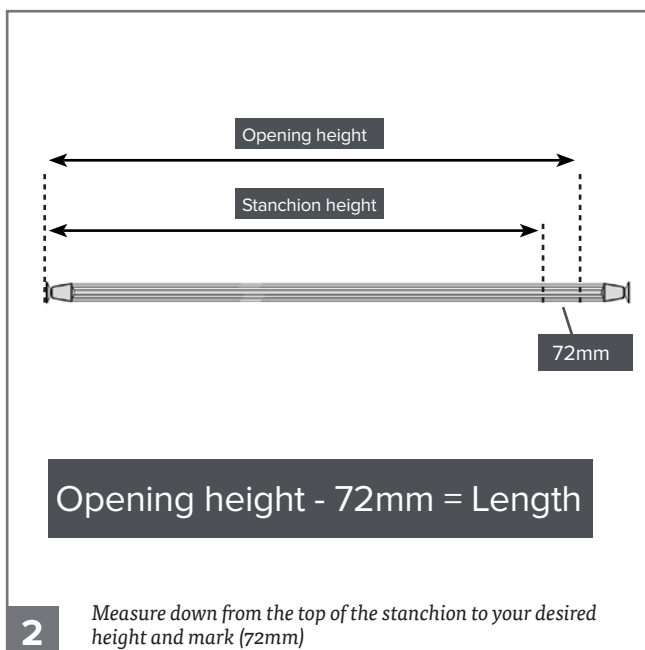
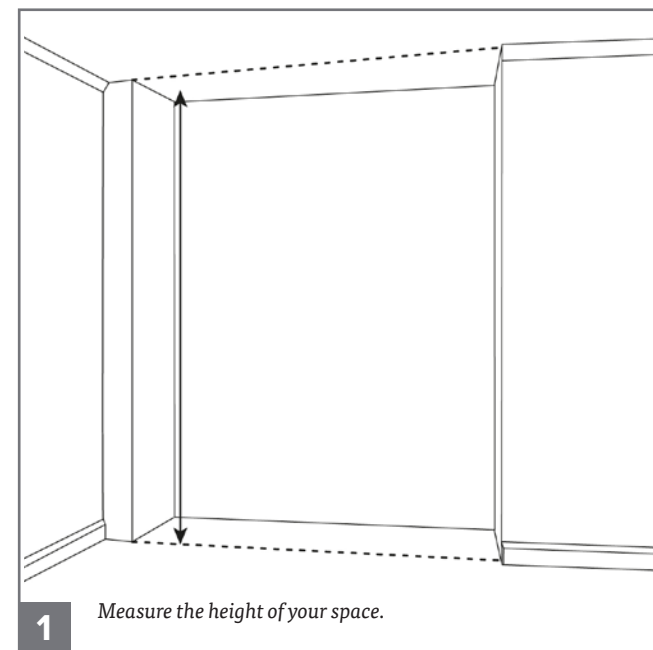


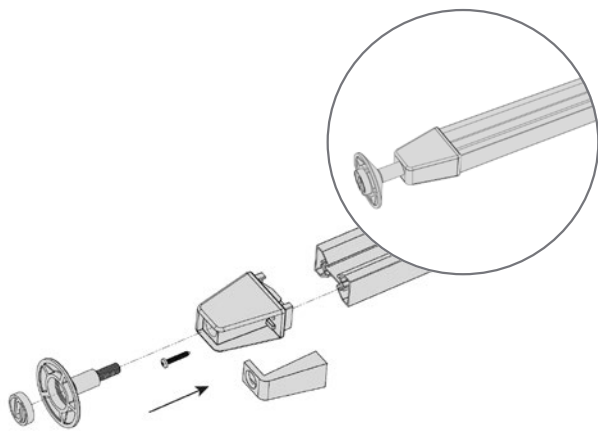
⊘ Screws not supplied. Use suitable screws and plugs.

SIGNATURE
BY SPACESLIDE

V1

CUTTING/ADJUSTING THE STANCHIONS FOR YOUR OPEN HEIGHT

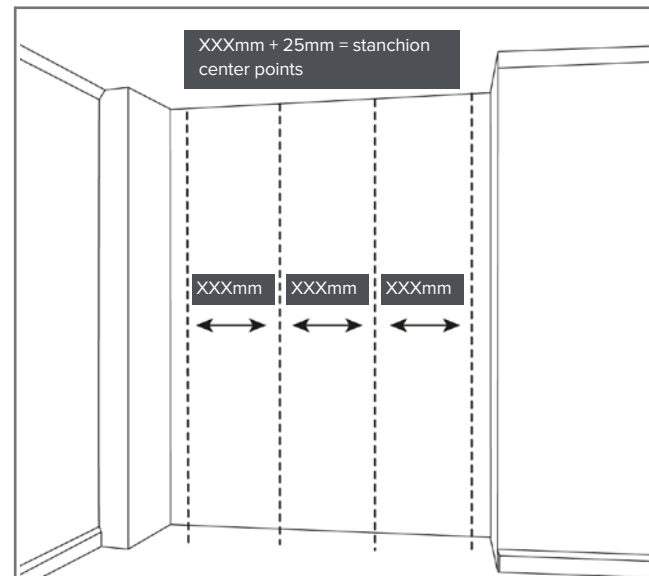




4

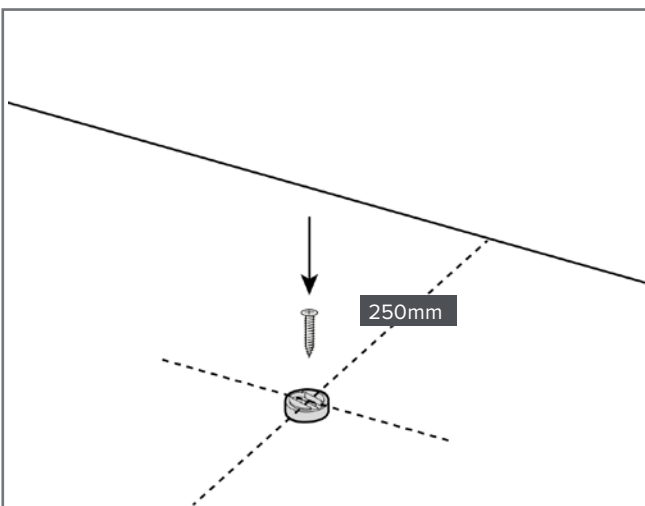
Re apply the bottom cap and adjustable screw back onto the stanchion.

FITTING THE STANCHIONS



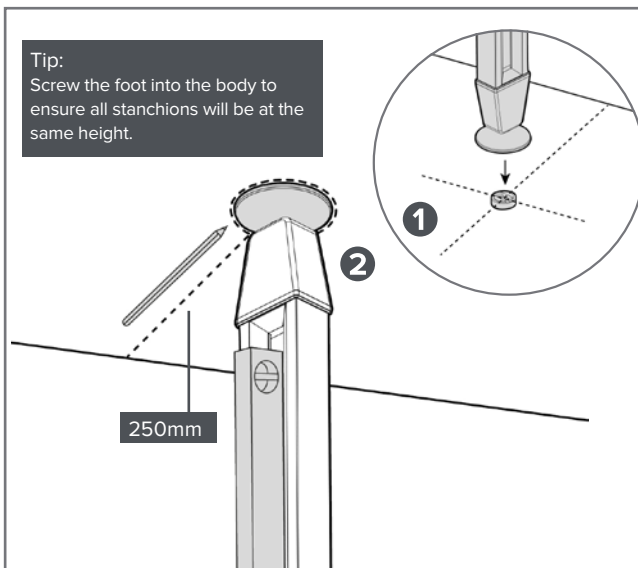
5

Mark where the stanchions need to be.
(this will be different depending on your storage kit.)



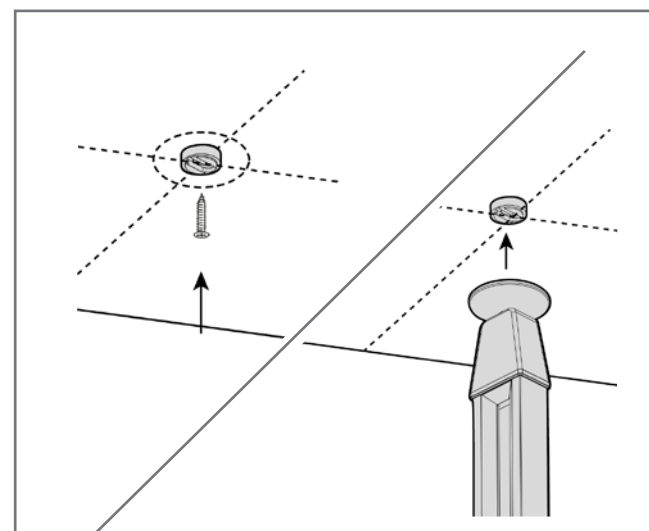
6

From your stanchion marks, measure out 250mm in a straight line from the back wall and screw button into place using suitable fixings.



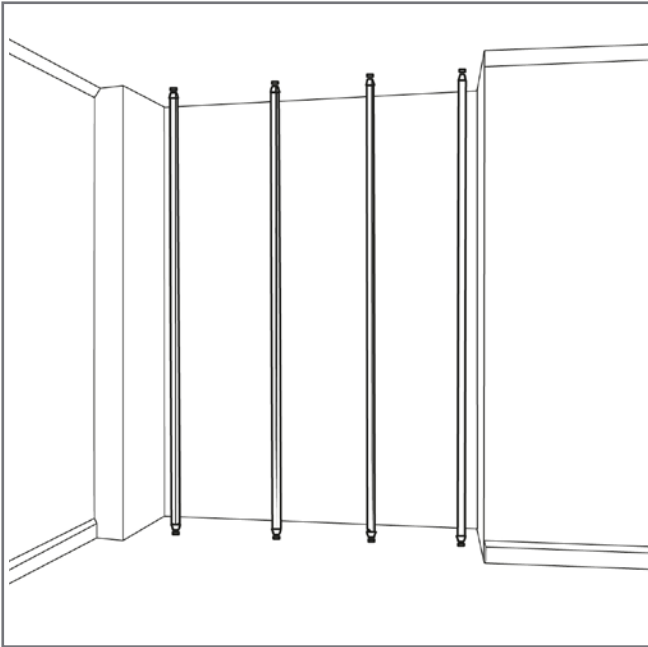
7

1. Place the stanchion on the floor bottom
2. Level up from the side of the stanchion and mark the ceiling.

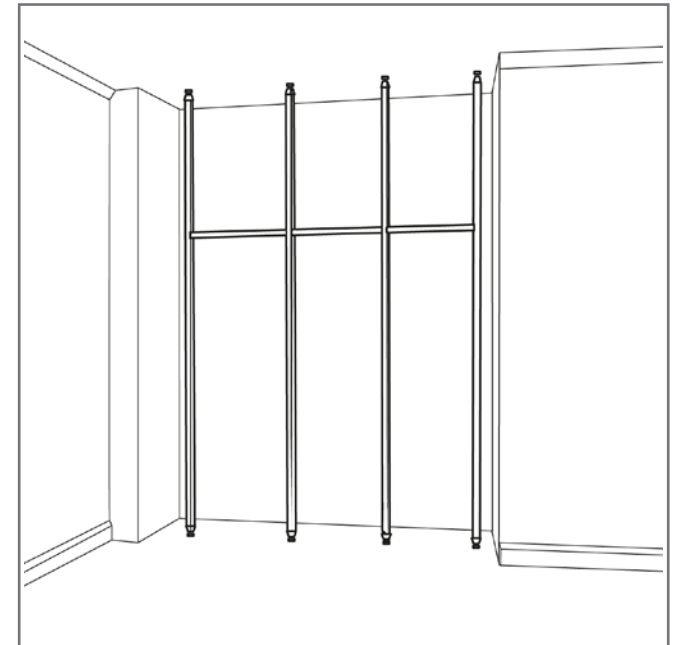
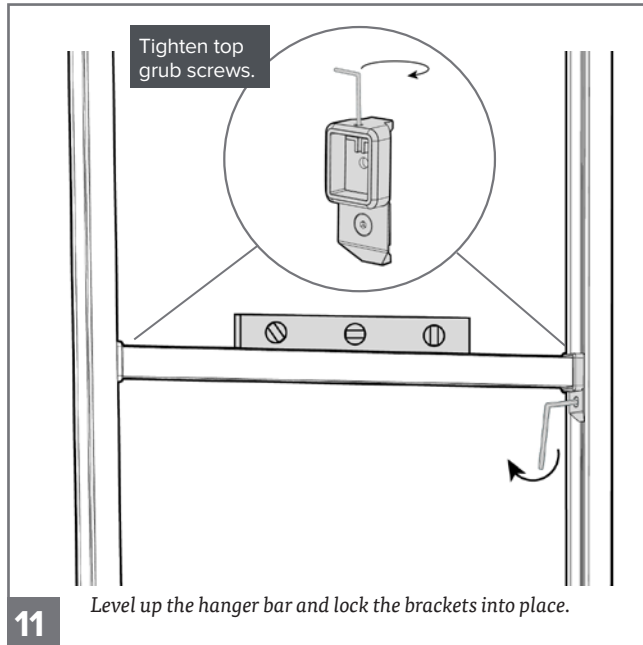
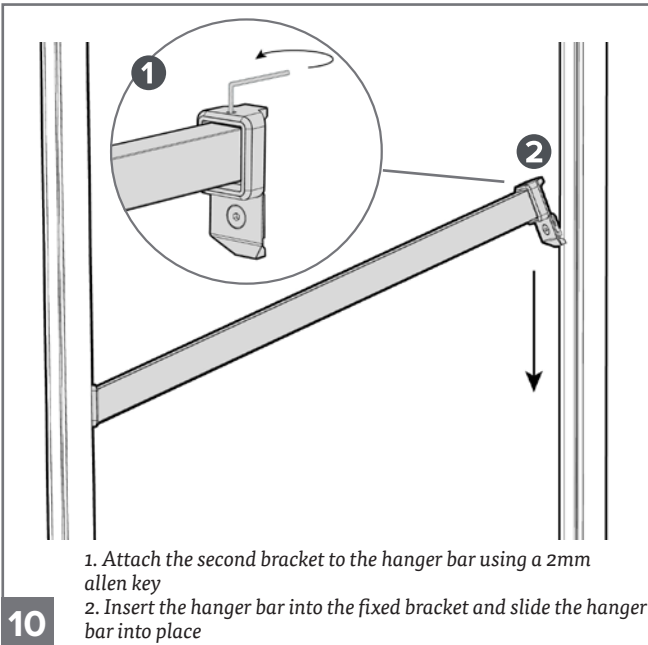
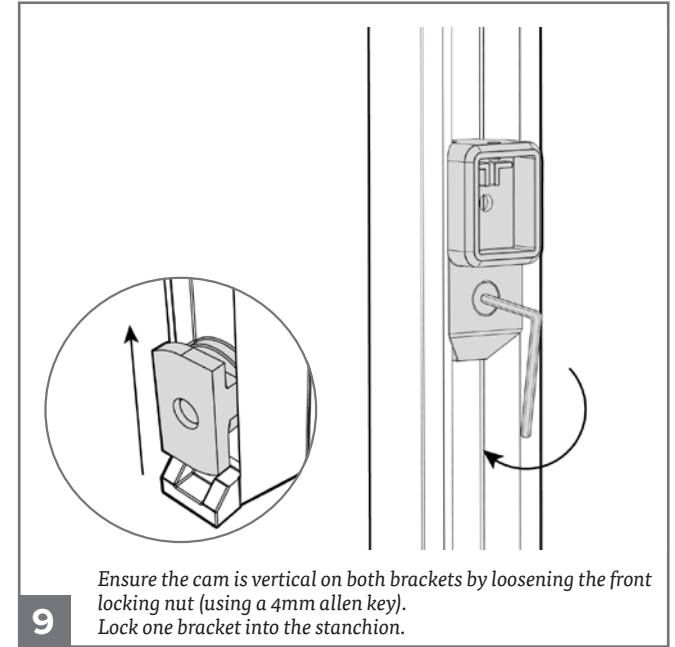


8

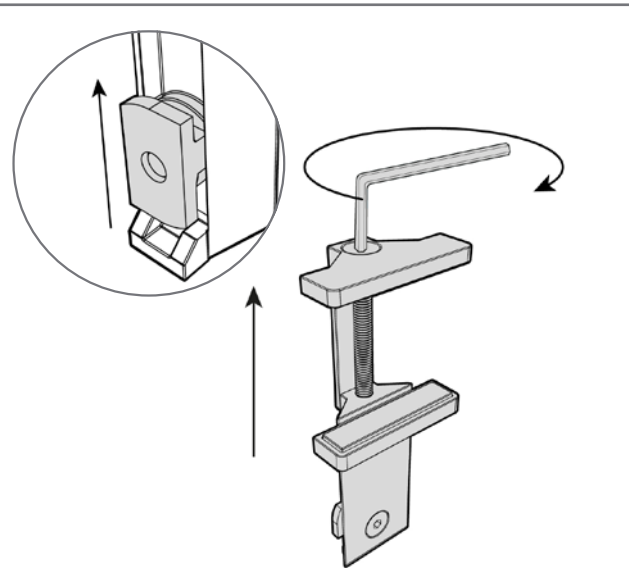
Move the stanchion to one side and using suitable fixings, screw the button to the ceiling. Once fixed, place stanchion over both buttons and fasten into place. Repeat for all floor to ceiling.



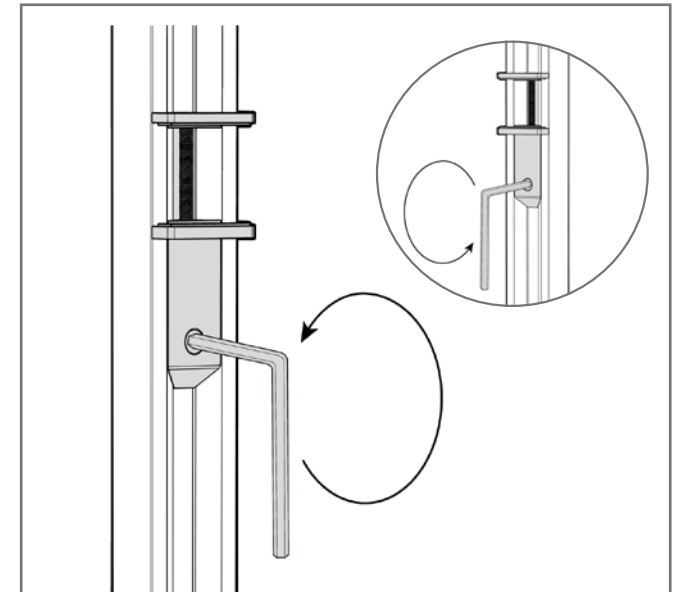
FITTING THE HANGER BARS



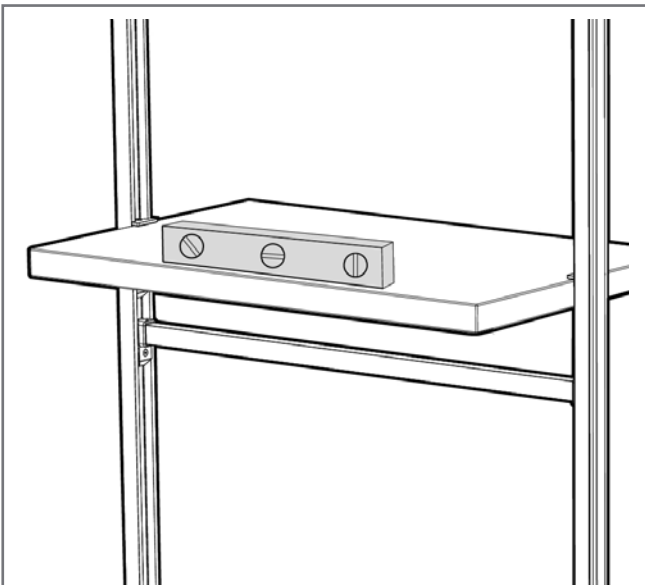
FITTING THE SHELVES



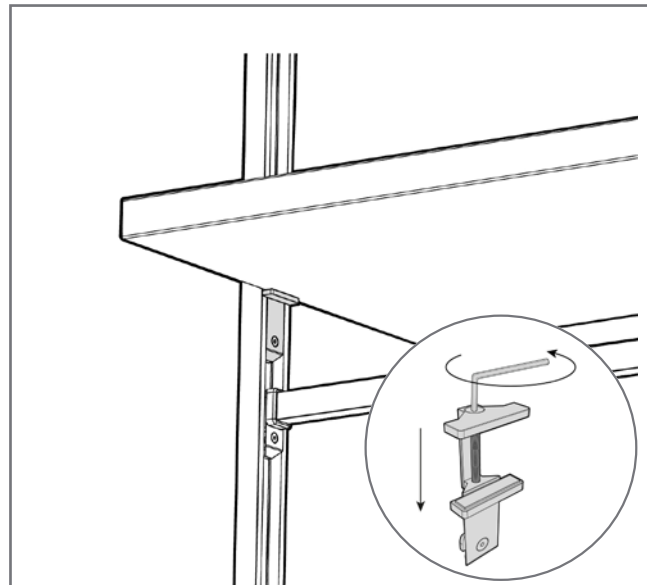
12 Open both brackets by using a 4mm allen key.



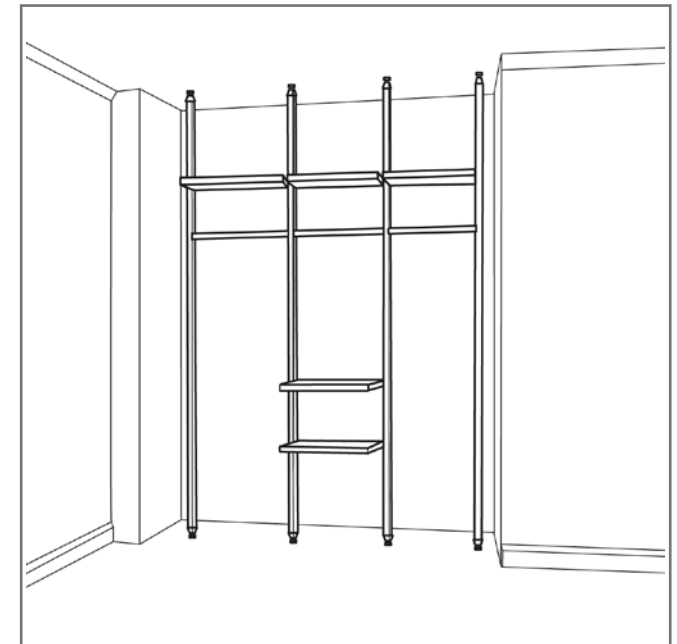
13 Position and lock both brackets onto the stanchions.



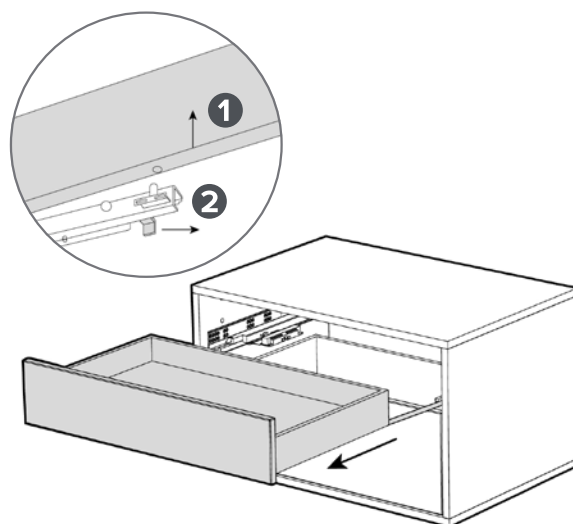
14 Insert the shelf into the brackets and level up.



15 Once level, secure the shelf into place by tightening the top bolt of the bracket.

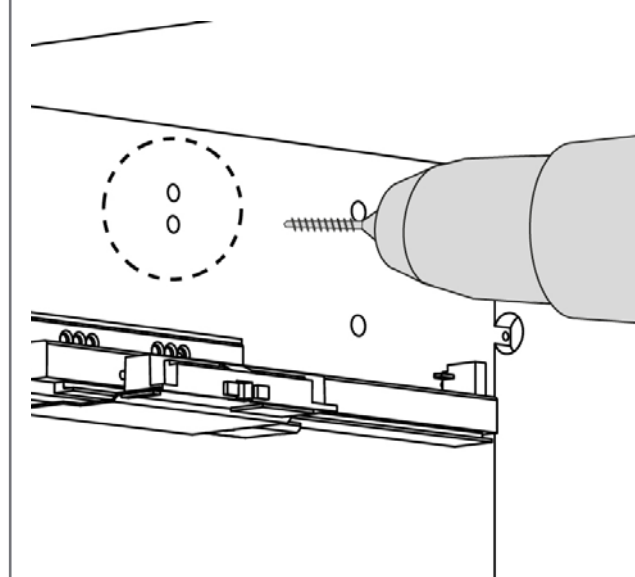


FITTING THE DRAWER UNITS



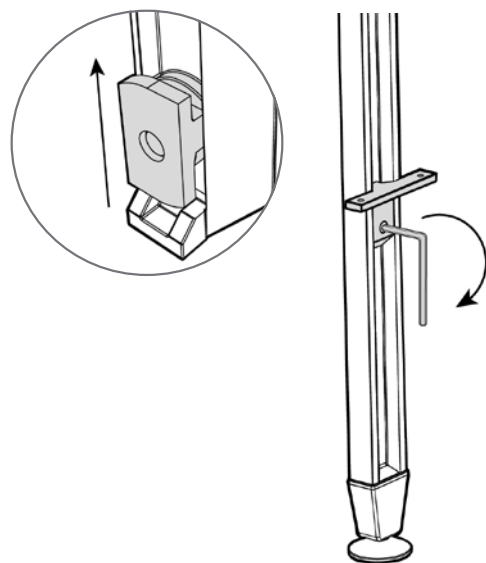
16

Pull the drawers out to expose the runner.
1- Unclip from the runners using the clips beneath the drawer.
2- Lift the drawer free.



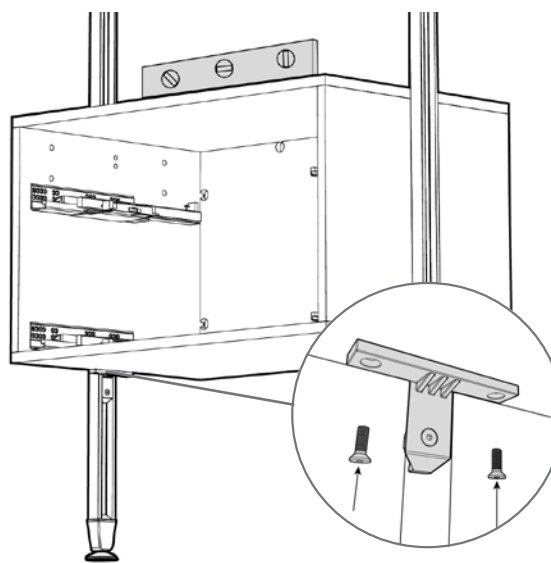
17

Drill through the two middle pilot holes using 8mm drill bit.
Do this on both sides.



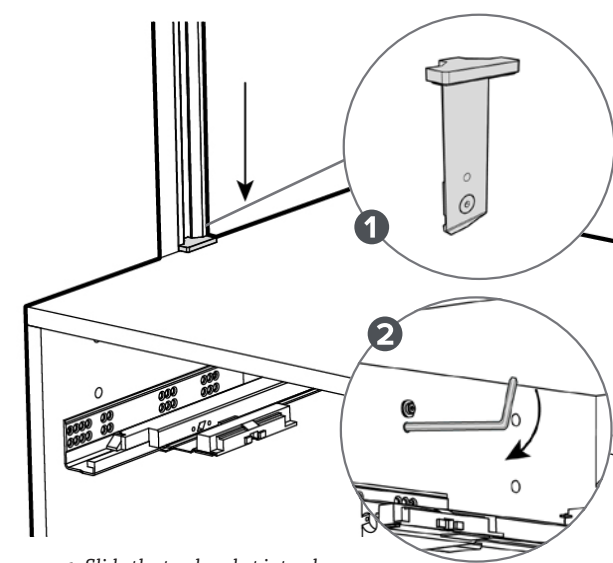
18

Position and lock the bottom brackets onto both the stanchions.
Repeat for all sides.



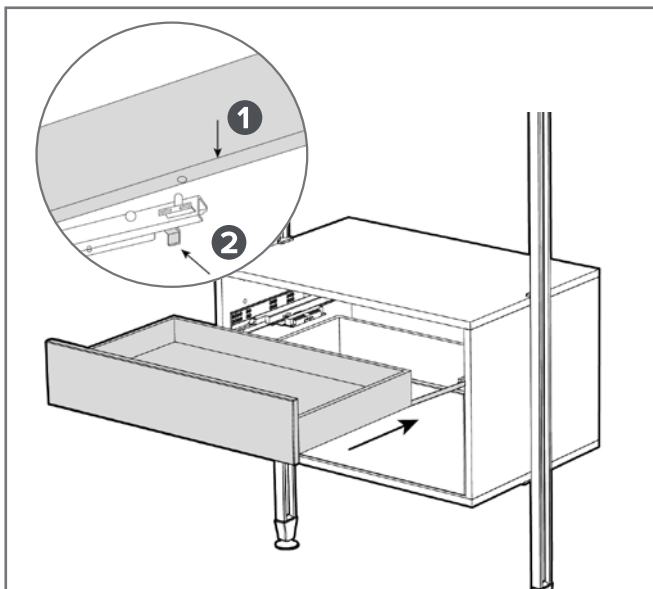
19

Position the drawer box onto the brackets and level up. Secure the
drawer box from underneath with bolts provided.

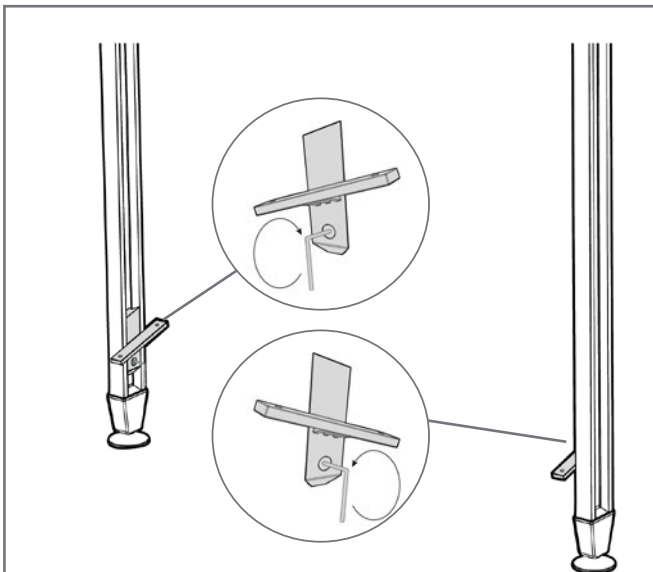
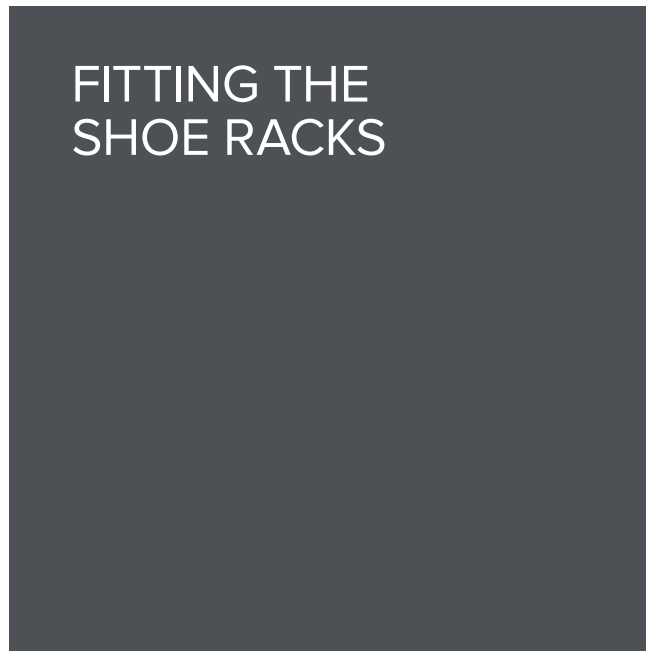
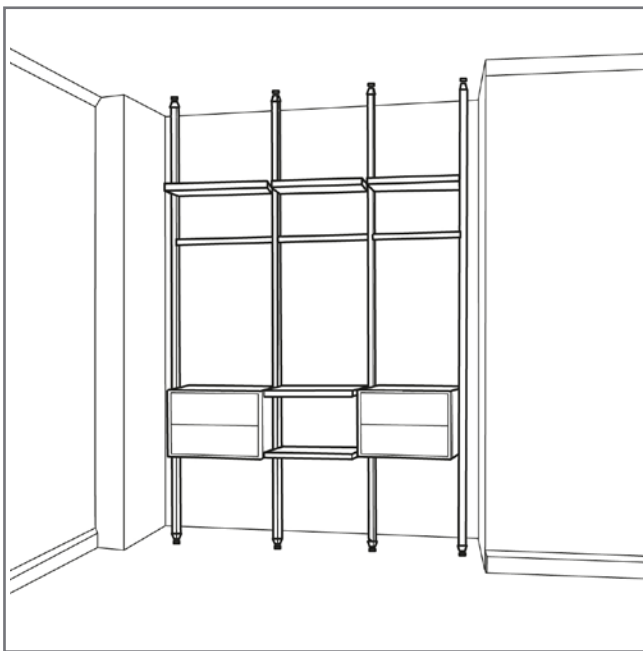


20

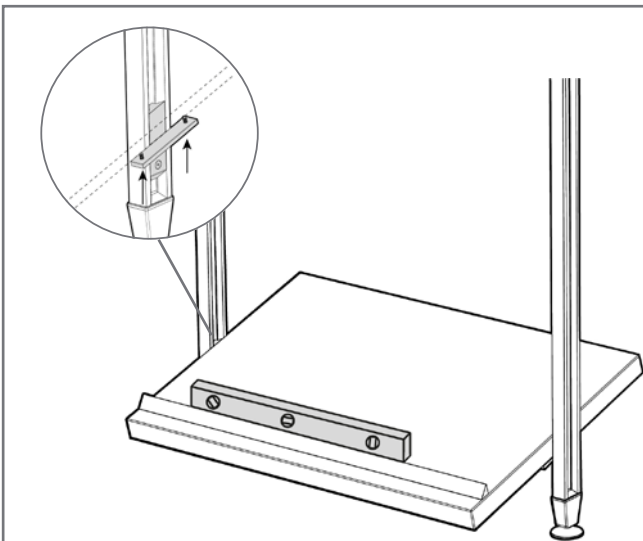
1. Slide the top bracket into place.
2. Secure the drawer box into place through both pilot holes.
Use the provided bolts in the TOP hole only.



21 1. Place the drawer box back onto the runner. 2. Secure the drawer box onto the runner using the clips. Repeat on both drawers.



22 Position both brackets onto the stanchions and lock into position using a 4mm allen key. The brackets should slope to the front.



23 Position the shoe rack onto the brackets and level up. Once level secure the shoe rack into position by using the bolts supplied. (You will require a 4mm allen key.)

